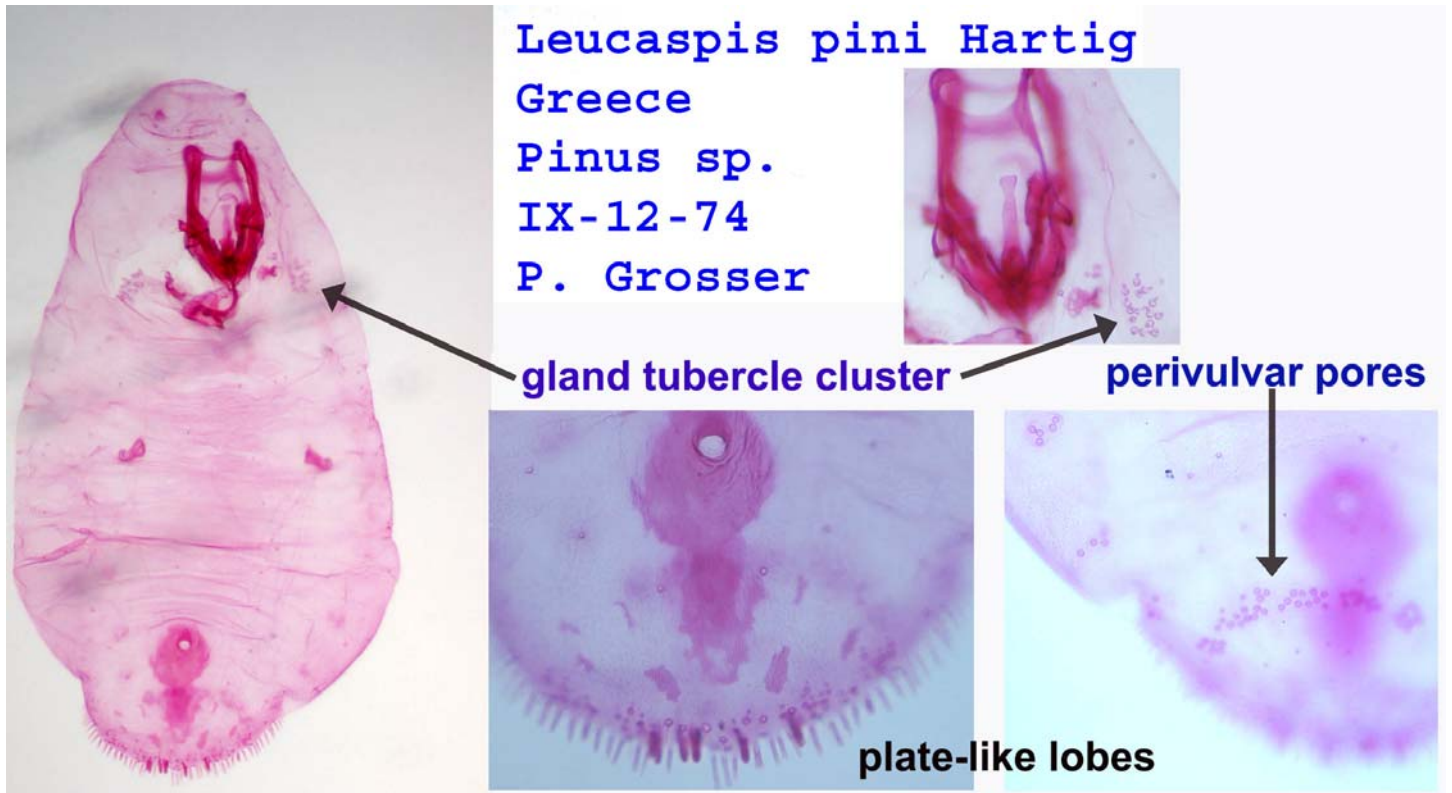
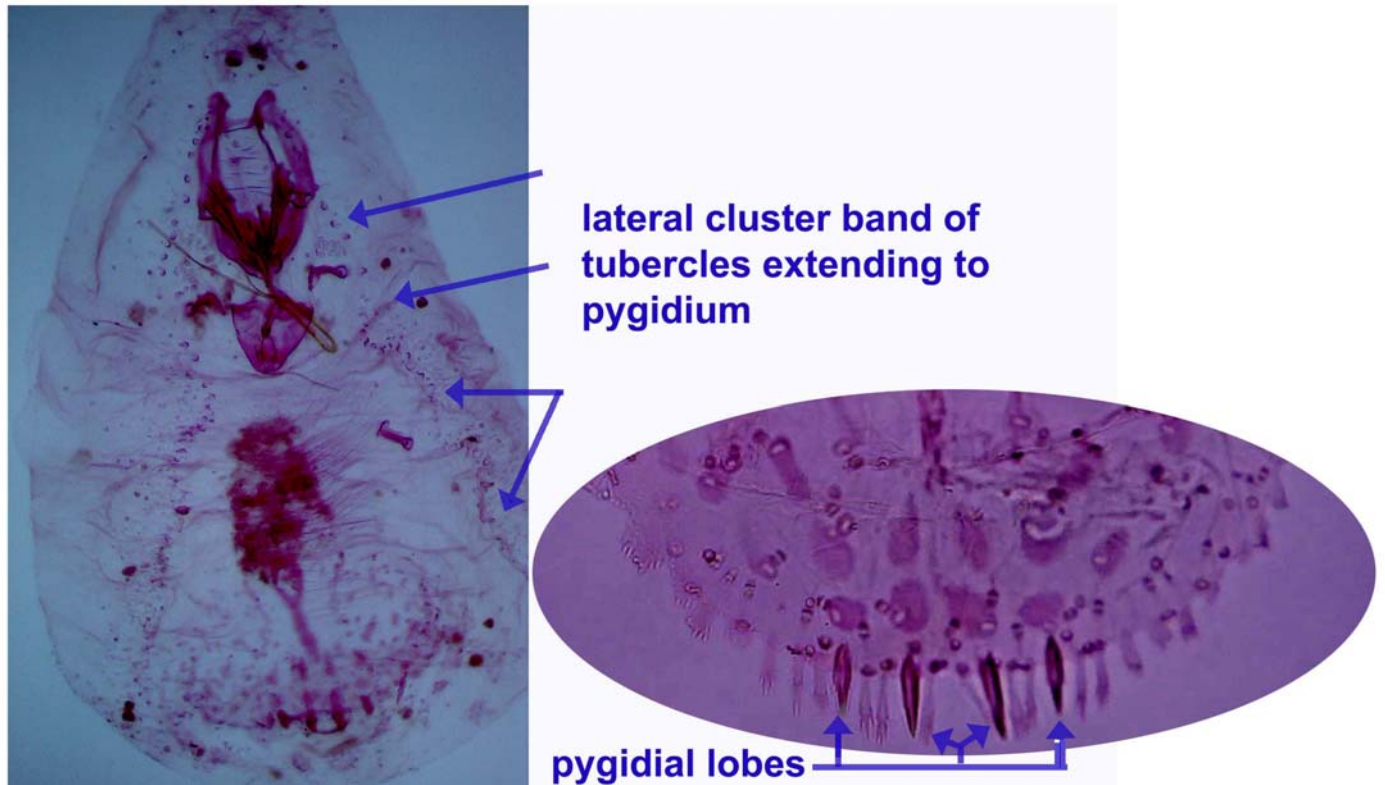


KEY TO THE LEUCASPIDINI GENERA OF THE DIASPIDIDAE

1. Adult female with an *elongate* cluster of gland tubercles lateral to each anterior spiracles; Pygidial lobes plate like & *sclerotized*.....[Leucaspis](#)



- 1' Adult female with a cluster of gland tubercles lateral to each anterior spiracles extending to the pygidium; pygidial lobes larger than plates, not apically fringed.....[Lopholeucaspis](#)



KEY TO THE LEUCASPIDINI GENERA OF THE DIASPIDIDAE

References & Bibliography :

1. PRINCIPLES OF CLASSIFICATION OF THE ARMORED SCALE INSECTS (HOMOPTERA, COCCOIDEA, DIASPIDIDAE) 1965 BY N.S.BORKSHENIUS.
2. “Atlas of the Scale Insects of North America” by G. F. Ferris 1937-1942.
3. “World Crop Pests Armored Scale Insects” Volume 4A and 4B W. Helle.
4. All images by PPQ (J. Dooley). Specimens provided by CDFA, PPQ, and ARS (Systematic Entomology Lab).

John Dooley