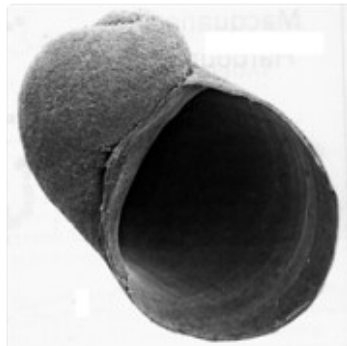




Austropeplea (Kutikina) hispida
Ponder & Waterhouse, 1997



Austropeplea (Kutikina) hispida (adult size up to 3 mm)



Austropeplea (Kutikina) hispida. SEM photo.



Distribution of *Austropeplea (Kutikina) hispida*.



Lower Franklin River - the habitat of *A. (K.) hispida* is on rocks along the sides of the river. Photo J. Ponder.

Diagnostic features

The shell is small, of 2.0-2.5 whorls, the aperture is greatly expanded and the well-developed periostracum bears short hairs.

Classification

Austropeplea (Kutikina) hispida Ponder & Waterhouse, 1997

Class Gastropoda

Infraclass Heterobranchia

Megaorder Hygrophila

Order Lymnaeida

Superfamily Lymnoidea

Family Lymnaeidae

Genus *Austropeplea* Cotton, 1942

Subgenus *Kutikina* Ponder & Waterhouse, 1997 (Type species *Kutikina hispida* Ponder & Waterhouse, 1997)

Original name: *Kutikina hispida* Ponder & Waterhouse, 1997. In Ponder, W.F. & Waterhouse, J.H. (1997) A new genus and species of Lymnaeidae from the lower Franklin River, south western Tasmania, Australia. *Journal of Molluscan Studies* 63: 441 - 468.

Type locality: Lower section of the Franklin River, 500 metres downstream of Kutikina Cave, Tasmania.

Biology and ecology

Occurs below the water line, attached to smooth or algal and liverwort-covered vertical or near-vertical limestone rocks, boulders or rock faces on the edges of the river where there is a fast flow.

Distribution

Only known from the lower Franklin River, southwest Tasmania.

Notes

Apparently restricted to limestone.

Further reading

Beesley, P. L., Ross, G. J. B. & Wells, A., Eds. (1998). *Mollusca: The Southern Synthesis. Parts A & B*. Melbourne, CSIRO Publishing.

Ponder, W. F. & Waterhouse, J. H. (1997). A new genus and species of *Lymnaeidae* from the lower Franklin River, south western Tasmania, Australia. *Journal of Molluscan Studies* 63: 441-468.

Puslednik, L., Ponder, W. F., Dowton, M. & Davis, A. R. (2009). Examining the phylogeny of the Australasian Lymnaeidae (Heterobranchia: Pulmonata: Gastropoda) using mitochondrial, nuclear and morphological markers. *Molecular Phylogenetics and Evolution* 52: 643-659.

Vinarski, M. V., Clewing, C. & Albrecht, C. (2019). Lymnaeidae Rafinesque, 1815. Pp. 158-162 in C. Lydeard & Cummings, K. S. *Freshwater Mollusks of the World: a Distribution Atlas*. Baltimore, John Hopkins University Press.

To cite this resource: **Ponder, W. F., Hallan, A., Shea, M. E., Clark, S. A., Richards, K., Klunzinger, M. W., and Kessner, V. 2023. Australian Freshwater Molluscs. Revision 2.**

https://keys.lucidcentral.org/keys/v3/freshwater_molluscs/

To contact the authors for comment or suggestions, please email: fwmollusc@gmail.com

Copyright © 2023. All rights reserved. The Australian Museum.

