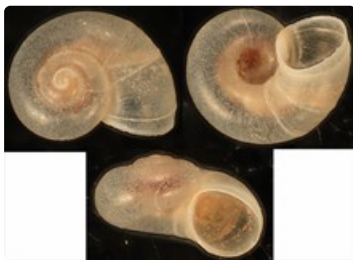




***Ngalidrobia glabra* Ponder,
Humphreys, Shea, Dolman &
Criscione, 2022**



Ngalidrobia glabra (shell diameter up to 1.9 mm).



Distribution of *Ngalidrobia glabra*.

Diagnostic features

The shell is smooth and the spire a little elevated.

Classification

Ngalidrobia glabra Ponder, Humphreys, Shea, Dolman & Criscione, 2022

Class Gastropoda

Infraclass Caenogastropoda

Order Littorinida

Suborder Rissoidina

Superfamily Truncatelloidea

Family Tateidae

Genus Ngaldrobia Ponder, Humphreys, Shea, Dolman & Criscione, 2022

Original name: Ngaldrobia glabra Ponder, Humphreys, Shea, Dolman & Criscione, 2022. In Ponder, W. F., Humphreys, W. F., Shea, M. E., Dolman, G. & Criscione, F. (2022). Subterranean Tateidae (Gastropoda; Caenogastropoda; Truncatelloidea) from the Ngalia Basin, Northern Territory, Australia. *Molluscan Research* 42: 50-72.

Type locality: In groundwater sampled from Coppocks Bore, Mount Wedge Station, Ngalia Basin, Northern Territory.

Biology and ecology

Members of this genus live in ground water and very little is known of their biology. They presumably feed on bacterial films.

Distribution

Known only from the type locality.

Further reading

Ponder, W. F., Humphreys, W. F., Shea, M. E., Dolman, G. & Criscione, F. (2022). Subterranean Tateidae (Gastropoda; Caenogastropoda; Truncatelloidea) from the Ngalia Basin, Northern Territory, Australia. *Molluscan Research* 42: 50-72.

To cite this resource: **Ponder, W. F., Hallan, A., Shea, M. E., Clark, S. A., Richards, K., Klunzinger, M. W., and Kessner, V. 2023. Australian Freshwater Molluscs. Revision 2.**

https://keys.lucidcentral.org/keys/v3/freshwater_molluscs/

To contact the authors for comment or suggestions, please email: fwmollusc@gmail.com

Copyright © 2023. All rights reserved. The Australian Museum.

