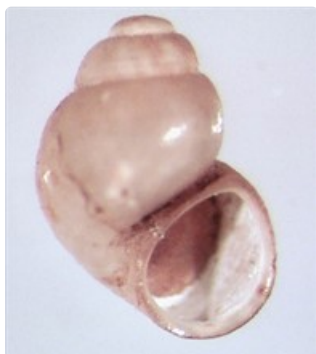




## ***Nundalia secreta* Ponder, Zhang, Hallan & Shea, 2019**



*Nundalia secreta* (size 1.7-2.0 mm).



Distribution of *Nundalia secreta*

### **Diagnostic features**

This small-sized taxon has reduced pegs on the inner side of the operculum. The bursa copulatrix is short with the bursal duct opening mid ventrally. The shell is ovate-conic with the inner lip either attached to the parietal wall or narrowly separated from it (as in the figured specimen).

The genus is diagnosed as follows by Ponder et al. (2021).

Shell small, conical, whorls convex, with growth lines only; peristome slightly to moderately thickened, non-umbilicate but umbilical chink present. Operculum thin, yellowish, subpyriform, paucispiral with last whorl large, nucleus acentric; inner surface with 2 or 3 reduced pegs near nucleus. Radula with central teeth having numerous cusps, median cusp narrow, sharp, about same length as adjacent cusps; lateral margins wide; innermost basal cusps rather narrow, sharp; basal tongue narrow, U-shaped. Male with prostate gland ovoid, with more than half in pallial roof. Pallial vas deferens simple to slightly undulating. Penis simple, of even thickness until distal end where it tapers to short papilla; glands and processes absent. Female with coiled oviduct with short, anteriorly-pointing arch. Bursa copulatrix short, behind albumen gland. Oviduct narrow, ventral channel simple, with slightly expanded vestibule and terminal slit-like opening. Albumen gland with about anterior third in pallial roof; without associated cowl or gutter.

## Classification

*Nundalia secreta* Ponder, Zhang, Hallan & Shea, 2019

Class Gastropoda

Infraclass Caenogastropoda

Order Littorinida

Suborder Rissoidina

Superfamily Truncatelloidea

Genus *Nundalia* Ponder, Zhang, Hallan & Shea, 2019 (Type species: *Nundalia secreta* Ponder, Zhang, Hallan & Shea, 2019).

*Original name:* *Nundalia secreta* Ponder, Zhang, Hallan & Shea, 2019. In Ponder, W. F., Zhang, W. -H., Hallan, A., & Shea, M. E. (2019). New taxa of Tateidae (Caenogastropoda, Truncatelloidea) from springs associated with the Great Artesian Basin and Einasleigh Uplands, Queensland, with the description of two related taxa from eastern coastal drainages. *Zootaxa* 4583(1): 1-67.

*Type locality:* South Head Creek, Nundle State Forest, NE NSW.

## Biology and ecology

Living on vegetation in small spring-fed streams.

## Distribution

Small streams, Great Dividing Range near Nundle, northeast NSW.

## Further reading

Ponder, W. (2019). Tateidae Thiele, 1925. Pp. 134-138 in C. Lydeard & Cummings, K. S. *Freshwater Mollusks of the World: a Distribution Atlas*. Baltimore, John Hopkins University Press.

Ponder, W. F., Zhang, W. -H., Hallan, A., & Shea, M. E. (2019). New taxa of Tateidae (Caenogastropoda, Truncatelloidea) from springs associated with the Great Artesian Basin and Einasleigh Uplands, Queensland, with the description of two related taxa from eastern coastal drainages. *Zootaxa* 4583(1): 1-67.

---

To cite this resource: **Ponder, W. F., Hallan, A., Shea, M. E., Clark, S. A., Richards, K., Klunzinger, M. W., and Kessner, V. 2023. Australian Freshwater Molluscs. Revision 2.**

[https://keys.lucidcentral.org/keys/v3/freshwater\\_molluscs/](https://keys.lucidcentral.org/keys/v3/freshwater_molluscs/)

To contact the authors for comment or suggestions, please email: [fwmollusc@gmail.com](mailto:fwmollusc@gmail.com)

Copyright © 2023. All rights reserved. The Australian Museum.

