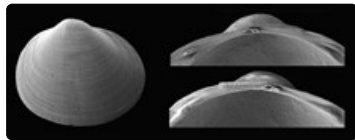




Sphaerium (Musculium) quirindi
Korniushin, 2000



Sphaerium (Musculium) quirindi (adult size 3.9-6.5 mm)



Distribution of *Sphaerium (Musculium) quirindi*.

Diagnostic features

Korniushin (2000) noted that the "Shell outline, position of umbo and hinge details are subject to individual variation.....is similar to the form of *S. tasmanicum* distributed in the upper Murray catchment but differs from it in its solid shell and strong hinge. These characters were also evident in the population from Attunga State forest living in sympatry with *M. tasmanicum*". *S. (M.) quirindi* is distinguished from *M. tatiarae* by its small, elongate and inflated shell as well as by its dense shell pores (Korniushin, 2000).

Classification

Sphaerium (Musculium) quirindi (Korniushin, 2000)

Common name: Pea shell, pea clam, pill clam

Class Bivalvia

Infraclass Heteroconchia

Cohort Heterodonta

Megaorder Neoheterodonte

Order Sphaeriida

Superfamily Sphaerioidea

Family Sphaeriidae

Subfamily Sphaeriinae

Genus *Sphaerium* Scopoli, 1777

Type species: *Tellina cornea* Linnaeus, 1758. Europe.

Subgenus *Musculium* Link, 1807

Original name: *Musculium (Sphaerinova) quirindi* Korniuschin, 2000. In Korniuschin, A. V. (2000). Review of the family Sphaeriidae (Mollusca: Bivalvia) of Australia, with the description of four new species. *Records of the Australian Museum* 52(1): 41 - 102.

Type locality: Quipolly Creek, on Quirindi - Breeza Road, northwest of Quirindi, New South Wales.

Biology and ecology

Two to four brood pouches per gill with three to eight embryos each. Prefers swift flowing creeks with dense vegetation. Suspension and deposit feeder.

Distribution

Western slope of Great Dividing Range, North-eastern New South Wales.

Further reading

Korniuschin, A. V. (2000). Review of the family Sphaeriidae (Mollusca: Bivalvia) of Australia, with the description of four new species. *Records of the Australian Museum* 52: 41-102.

Lee, T. (2019). Sphaeriidae Deshayes, 1855 (1820). Pp. 197-201 in C. Lydeard & Cummings, K. S. *Freshwater Mollusks of the World: a Distribution Atlas*. Baltimore, John Hopkins University Press.

Lee, T. & Ó Foighil, D. (2003). Phylogenetic structure of the Sphaeriinae, a global clade of freshwater bivalve molluscs, inferred from nuclear (ITS-1) and mitochondrial (16S) ribosomal gene sequences. *Zoological Journal of the Linnean Society* 137: 245-260.

To cite this resource: **Ponder, W. F., Hallan, A., Shea, M. E., Clark, S. A., Richards, K., Klunzinger, M. W., and Kessner, V. 2023. Australian Freshwater Molluscs. Revision 2.**

https://keys.lucidcentral.org/keys/v3/freshwater_molluscs/

To contact the authors for comment or suggestions, please email: fwmollusc@gmail.com

Copyright © 2023. All rights reserved. The Australian Museum.

