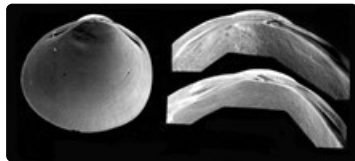




***Sphaerium (Musculium) tatiarae* (Cotton & Godfrey, 1938)**



Sphaerium (Musculium) tatiarae (adult size 6-9 mm)



Distribution of *Sphaerium (Musculium) tatiarae*.

Diagnostic features

Korniushin (2000) noted that this species can be distinguished from *S. (S). tasmanicum* by the rounded shell outline, broad and posteriorly shifted umbo, broad and strongly curved hinge plate, hooked cardinal teeth and arched lateral teeth and the widely spaced shell pores. Also, the white colour of the shell is a distinctive character of *S. (M). tatiarae* and the open nephridium type in *S. (M). tatiarae* was also noted.

Classification

Sphaerium (Musculium) tatiarae Cotton & Godfrey, 1938

Common name: Pea shell, pea clam, pill clam

Class Bivalvia

Infraclass Heteroconchia

Cohort Heterodonta

Megaorder Neoheterodontei

Order Sphaeriida

Superfamily Sphaerioidea

Family Sphaeriidae

Subfamily Sphaeriinae

Genus *Sphaerium* Scopoli, 1777

Type species: *Tellina cornea* Linnaeus, 1758. Europe.

Subgenus *Musculium* Link, 1807

Subgenus *Sphaerinova* Iredale, 1943

Original name: *Sphaerium tatiarae* Cotton & Godfrey, 1938. In Cotton, B. C., & Godfrey, F. K. (1938). *The Molluscs of South Australia. Part 1. Pelecypoda*. Adelaide: Government Printer.

Type locality: Tatiara Creek, Bordertown, South Australia.

Synonym: *Sphaerinova bursa* Cotton, 1953.

Biology and ecology

Shallow burrower in sand/mud and amongst roots in flowing creeks. Suspension and deposit feeder. Larvae brooded.

Distribution

Southern Victoria, South Australia, northern Tasmania. Specimens with similar characters occur in New South Wales, but it needs to be confirmed whether these belong to *M. tatiarae*.

Further reading

Komiushin, A. V. (2000). Review of the family Sphaeriidae (Mollusca: Bivalvia) of Australia, with the description of four new species. *Records of the Australian Museum* 52: 41-102.

Kuiper, J. G. J. (1983). The Sphaeriidae of Australia. *Basteria* 47: 3-52.

Lee, T. (2019). Sphaeriidae Deshayes, 1855 (1820). Pp. 197-201 in C. Lydeard & Cummings, K. S. *Freshwater Mollusks of the World: a Distribution Atlas*. Baltimore, John Hopkins University Press.

Lee, T. & Ó Foighil, D. (2003). Phylogenetic structure of the Sphaeriinae, a global clade of freshwater bivalve molluscs, inferred from nuclear (ITS-1) and mitochondrial (16S) ribosomal gene sequences. *Zoological Journal of the Linnean Society* 137: 245-260.

To cite this resource: **Ponder, W. F., Hallan, A., Shea, M. E., Clark, S. A., Richards, K., Klunzinger, M. W., and Kessner, V. 2023. Australian Freshwater Molluscs. Revision 2.**

https://keys.lucidcentral.org/keys/v3/freshwater_molluscs/

To contact the authors for comment or suggestions, please email: fwmollusc@gmail.com

Copyright © 2023. All rights reserved. The Australian Museum.

