

Dodonaethrips eremiae



Distinguishing features

Female macroptera. Body brownish yellow to light brown, tergite IX darkest, head with dark post-occipital ridge; legs yellowish brown, tarsi yellow; antennal segment I white, II-VIII light brown; fore wings uniformly but weakly shaded. Head usually without sculpture except on posterior third; eyes large with 6 pigmented facets; ocellar setae short and blunt, pair I close to fore ocellus, pair III within ocellar triangle; 2 pairs of postocular setae; maxillary palps 2-segmented. Antennae 8-segmented, sense cone on segment III and IV forked, II-VI with microtrichial rows, I without dorso-apical setae. Pronotum transverse, almost without sculpture, all setae short and blunt. Mesonotum and metascutum without campaniform sensilla; metascutum reticulate, median setae arise medially. Prosternal ferna entire; basantra without setae. Mesothoracic and metathoracic furcae each with prominent spinula; mesothoracic sternopleural sutures complete. Metapre-episternum weakly developed. Tarsi 1-segmented. Fore wing relatively broad; first vein with about 7 setae on basal half, 2 setae distally; second vein with 7-10 setae; clavus with 4 veinal setae and 1 basal submarginal (?discal) seta. Tergites and sternites without craspeda; tergites with little sculpture, median setae wider apart than their length lateral setae blunt; tergite VIII with no comb; tergite IX without campaniform sensilla, or with one pair posteromedially, MD setae short and arising laterally; tergite X with dorsal split short. Sternite II with 2 pairs of marginal setae, III-VII with 3 pairs of marginal setae, S1 and S2 on VII arising sub-marginally, without discal setae; posterior sternites with short weak microtrichia on transverse lines of sculpture.

Male macroptera. Similar to female; sternite III pore plate thick-walled, internal markings scarcely visible; tergite IX without campaniform sensilla, dorsal setae slender.



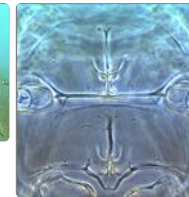
female



Head



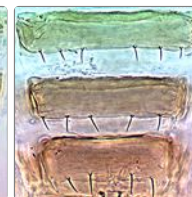
Meso & metanotum



Meso & meta furcae



Tergites VI-VIII



Sternites V-VII



Male sternite III pore plate

Related species

The genus *Dodonaethrips* includes only one species. Although similar to species of *Anaphothrips* in appearance, *D. eremiae* is remarkable in having single segmented tarsi, also a metathoracic as well as a mesothoracic furca. Moreover, the maxillary palps are 2-segmented, and the ninth tergite usually lacks campaniform sensilla in females.

Biological data

Feeding and breeding on the leaves of *Dodonaea* sp. [Sapindaceae]; adults taken from *Acacia stenophylla* and *A. aneura* [Mimosaceae].

Distribution data

Known only from Australia (New South Wales, Queensland, South Australia).

Family name

THRIPIDAE - THRIPINAE

Species name

Dodonaethrips eremiae Mound & Masumoto

Original name and synonyms

Dodonaethrips eremiae Mound & Masumoto, 2009: 60.

References

Mound LA & Masumoto M (2009) Australian Thripinae of the *Anaphothrips* genus-group (Thysanoptera), with three new genera and thirty-three new species. *Zootaxa* **2042**: 1–76.
<http://www.mapress.com/zootaxa/2009/f/zt02042p076.pdf>