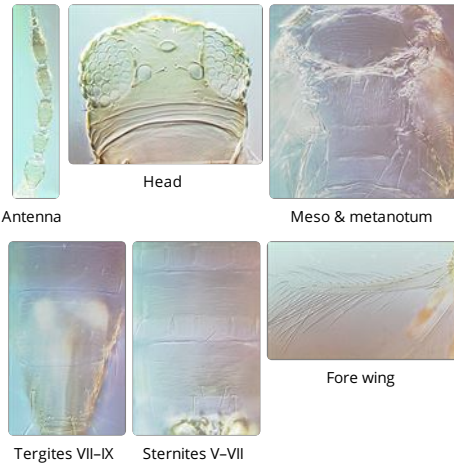


# Exothrips sacchari



## Distinguishing features

Female macroptera. Body and legs yellow, apex of tergite X usually brown; antennal segment VI brown in apical half, VII–VIII brown; fore wings pale. Antennae 8-segmented, segment I with no dorso-apical setae, sense cone on III–IV forked. Head broadest across eyes; compound eyes with 5 weakly pigmented facets; ocellar setae pair I present, pair III close together on anterior tangent to posterior ocelli; maxillary palps 3-segmented. Pronotum weakly trapezoidal; with 8 pairs of posteromarginal setae, pair VIII longest and parallel to pronotal margin. Prosternal basantra weakly granulate with no setae; fernal plates weakly connected medially; meso and meta furca without spinula. Mesonotal anterior campaniform sensilla present, median pair of setae distant from posterior margin. Metanotum weakly reticulate medially; median setae just behind anterior margin; campaniform sensilla present. Fore wing slender, first vein with 6 setae near base, 3 widely spaced setae on distal half; second vein with 4 widely spaced setae; clavus with 5 veinal setae and 1 discal seta; posterior fringe wavy. Tergites weakly sculptured medially; II–VIII with broad craspedum, campaniform sensilla near posterior margin; IX with 2 pairs of campaniform sensilla, median dorsal setae slender; X with complete median split. Sternites with no discal setae; II–VI posterior margin with craspedum forming large lobes between marginal setae; sternite II with 2 pairs of marginal setae, III–VII with 3 pairs, median 2 pairs on VII arise close together. Male smaller than female; tergite IX median setal pair small and close together; sternites with no pore plates.



## Related species

The genus *Exothrips* includes 19 species from various parts of the Old World tropics. It appears to represent a grass-feeding lineage of species derived from *Rhamphothrips*, with the head larger relative to the pronotum, the pronotum less elongate, and the prosternal ferna not curving forward medially. *Parexothrips* differs in the position of ocellar setae pair I, and also in the presence of setae on the prosternum.

## Biological data

Feeding and breeding on the leaves of various Poaceae, including *Sorghum* sp.

## Distribution data

Described from the Philippines, and recorded from India and New Guinea; known in Australia from northwestern Australia, Northern Territory, Queensland.

## Family name

THRIPIDAE - THRIPINAE

## Species name

*Exothrips sacchari* (Moulton)

## Original name and synonyms

*Anaphothrips sacchari* Moulton, 1936: 265.

## References

Mound LA (2011) Grass-dependent Thysanoptera of the family Thripidae from Australia. *Zootaxa* 3064 : 1–40.  
<http://www.mapress.com/zootaxa/2011/f/zt03064p040.pdf>

