

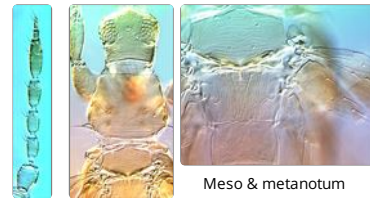
# Monothrips cuspis



## Distinguishing features

Female macroptera. Body, legs and antennae yellow, antennal segment VI light brown, also VII–VIII; abdominal segment X and distal half of IX brown; major setae pale; fore wing weakly shaded in basal third, then darker medially with apex pale; compound eyes with 5 pigmented facets. Antennal segments III–IV with sense cone simple. Head with anterior margin slightly conical; ocellar setae pair I wide apart, pair III arising between hind margins of posterior ocelli; maxillary palps 3-segmented. Pronotum posterior margin with 4 pairs of setae, outer posteroangular setae shorter than inner pair. Prosternal basantra granulate, with one pair of setae; fernal plates large with slender median connection. Metanotal sculpture transverse at anterior, linear on posterior half. Fore wing first vein with 3 + 2 setae on basal half, 3 widely spaced setae on distal half; second vein with 5 to 7 widely spaced setae; clavus with 4–5 marginal but no discal setae. Hind tibia with row of stout setae on inner margin. Tergal sculpture weak, particularly medially; II–VIII with campaniform sensilla close to posterior margin; craspedum broad on II–VIII, with long prominent teeth on VII–VIII; tergites VI–VIII with prominent microtrichia on 3 or 4 lines of sculpture laterally; IX with 2 pairs of campaniform sensilla, median dorsal setae small and slender. Sternites II–VII with transverse row of 5–9 discal setae medially; craspedum of long teeth on II–VI complete medially, incomplete on VII.

Male not known.



Antenna Head & thorax



Thoracic sternites Tergites VI–VIII Sternites

## Related species

The genus *Monothrips* includes two species, both of which are known only from macropterous females. These species share character states with the apterous species of *Caprithrips*, but the most closely related genus is probably *Masamithrips*, despite the presence of a toothed craspedum on the abdominal sternites. *M. cuspis* differs from *M. flavus* in having a complete craspedum of long teeth on sternites II–VI.

## Biological data

Feeding and breeding on the leaves of native grasses [Poaceae].

## Distribution data

Known only from Western Australia.

## Family name

THRIPIDAE - THRIPINAE

## Species name

*Monothrips cuspis* Mound

## Original name and synonyms

*Monothrips cuspis* Mound, 2011: 28.

## References

Mound LA (2011b) Grass-dependent Thysanoptera of the family Thripidae from Australia. *Zootaxa* 3064 : 1–40. <http://www.mapress.com/zootaxa/2011/f/zt03064p040.pdf>

