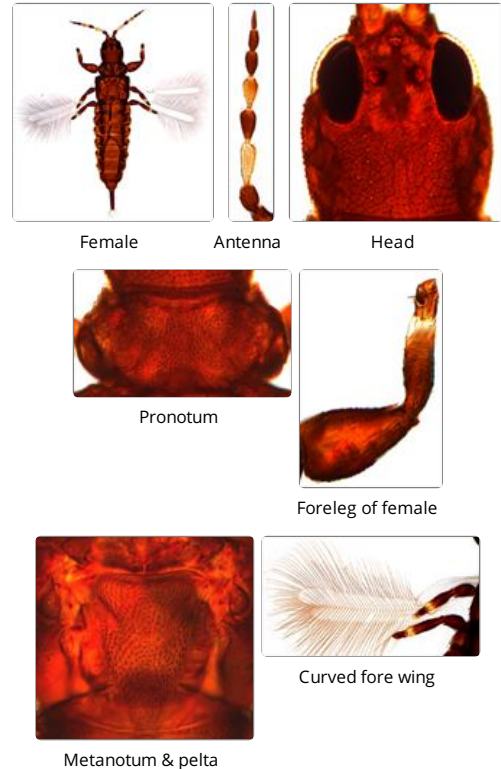


Stictothrips maculatus

Distinguishing features

Both sexes fully winged. Body brown with chalky-white line laterally from eyes along abdomen, also chalky marks on femora; tarsi light brown, tibiae with base and apex yellow; antennae brown with segments III and V yellow; fore wing pale. Antennae 8-segmented; segment III with one sense cone, IV with 2 sense cones; segment VIII slender and narrowed to base. Head about as wide as long, wider across cheeks than across eyes, projecting slightly in front of eyes; surface reticulate, with 2 longitudinal rows of short, broad capitate setae; maxillary stylets retracted to eyes, about one fifth of head width apart with maxillary bridge present. Pronotum with 5 pairs of short fan-shaped major setae, also one pair of similar setae posteromedially; surface with granulate sculpture. Fore tarsus with small, slightly hooked tooth. Metanotum with coarsely granulate sculpture, about 10 pairs or setae. Fore wing sharply bent at basal third, then parallel sided with no duplicated cilia, surface weakly reticulate. Abdominal tergites strongly sculptured laterally, III-VII with two pairs of flattened, weakly sigmoid, wing-retaining setae; tergite IX setae S1 shorter than width of tube.



Related species

The genus *Stictothrips* includes five described species (Mound & Tree, 2018), with one from Egypt, one widespread from South Africa across Asia, two from Australia, and *S. maculatus* from various parts of North America.

Biological data

Breeding on dead branches particularly of willow and poplar trees, and feeding on unidentified fungal hyphae.

Distribution data

Native to North America, and recorded from California, Oregon, Colorado, New York and Michigan.

Family name

PHLAEOTHIRIPIDAE, PHLAEOTHIRIPINAE

Species name

Stictothrips maculatus (Hood)

Original name and synonyms

Phloeothrips maculatus Hood, 1909: 250

References

Mound LA & Tree DJ (2015) Fungus-feeding Thysanoptera: Phlaeothripinae of the *Idiothrips* genus-group in Australia, with nine new species. *Zootaxa* **4034** (2): 325–341.