

# Astrothrips



## Generic diagnosis

Female macropterous. Head wider than long; strongly reticulate, projecting in front of eyes, ocellar region elevated; postocular setae obscured by reticulation, occipital ridge absent, cheeks constricted at base; maxillary palps 2-segmented. Antennae 5- to 7-segmented, segment I without paired dorso-apical setae; III with one simple sense cone, IV with two simple sense cones.

Pronotum strongly reticulate, no long setae. Mesonotum entire, reticulate, anteromedian campaniform sensilla absent.

Metanotum strongly reticulate with triangle, median setae close to posterior margin, campaniform sensilla present. Fore wing anterior fringe cilia longer than costa setae; first and second veins with almost complete setal rows; clavus with four veinal but no discal setae; posteromarginal fringe cilia wavy. Prosternal

basantra membranous, without setae; mesosternal endofurca without spinula; metasternal endofurca lyre-shaped but not reaching into mesothorax. Legs strongly reticulate, tarsi 1-

segmented. Tergites with entire craspedum; tergite II anterolaterally with group of stout recurved microtrichia; III-VIII reticulate laterally, with transverse sculpture anteromedially; VIII posterior margin without comb; IX without anterior pair of campaniform sensilla; X median split complete. Sternites with entire craspedum, II-VII with three pairs of posteromarginal setae, sternite VII with two small additional setae.

Male similar to female but smaller; sense cones on antennal segments III and IV sometimes differ from female, sternites with U or V-shaped pore plates or with no pore plates.

Male similar to female but smaller; sense cones on antennal segments III and IV sometimes differ from female, sternites with U or V-shaped pore plates or with no pore plates.

## Biological data

Species of this genus feed and breed on the leaves of many different plant species (Rachana *et al.*, 2019), sometimes causing damage on mature leaves.

## Distribution data

Members of this genus are found throughout the Palaeotropics, from West Africa to Northern Australia, Japan and southern China.

## Nomenclatural data

*Astrothrips* Karny, 1921: 239. Type species *Heliothrips globiceps* Karny 1913, by monotypy.

This genus includes 12 species (ThripsWiki, 2020), although the distinctions between some of these may not be entirely reliable (Rachana *et al.*, 2019). The following three species are recorded from China :

- aucubae* Kurosawa, 1932: 230.
- chisinfiaoensis* Chen, 1980: 174.
- strasseni* Kudo, 1979: 346.

## Relationship data



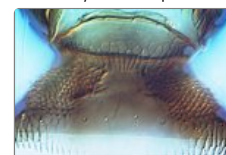
*tumiceps* female



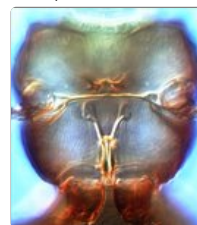
*tumiceps* head & pronotum



*tumiceps* meso & metanota



*tumiceps* tergites I-II



*tumiceps* metafurca



*tumiceps* fore wing

Thripidae sub-family Panchaethripinae: this group is represented widely around the world, particularly in tropical areas, and comprises about 40 genera. *Astrothrips* is one of seven genera in which the second abdominal tergite has paired anterolateral areas of stout, recurved microtrichia. These seven genera have been referred to a distinct Tribe, or even family (Bhatti, 2006), but the analysis by Mound *et al.* (2001) did not support such a classification.

## References

Bhatti JS (2006) The classification of Terebrantia (Insecta) into families. *Oriental Insects* **40**: 339–375.

Mound LA, Marullo R & Trueman JWH (2001) The greenhouse thrips, *Heliethrips haemorrhoidalis*, and its generic relationships within the sub-family Panchaethripinae (Thysanoptera; Thripidae). *Journal of Insect Systematics and Evolution* **32**: 1–12.

Rachana RR, Mound LA & Rayar SG (2019) Tryphactothripini of India (Thysanoptera, Thripidae, Panchaethripinae), with identification keys and a new record of *Opimothrips*. *ZooKeys* **884**: 43–52.

ThripsWiki (2020) *ThripsWiki - providing information on the World's thrips*. <[http://thrips.info/wiki/Main\\_Page](http://thrips.info/wiki/Main_Page)>