

# Caladenia caesarea subsp. 'Mooradung'

## Name and Authority

*Caladenia caesarea* subsp. 'Mooradung'

## Common Name

Mooradung Mustard Orchid

## Complex Name

*Caladenia filamentosa* (Wispy Spider Orchids)

## Originally Described by

Undescribed

## Distribution and Habitat

West and south-east of Boddington, growing in red-brown loam on the margins of seasonal drainage lines and in grey sandy-clay in seasonally damp flats. Currently known from just three populations

## Flowering Months

· · · · · Sep Oct · ·

## Description

A recently recognised [subspecies](#) 160-300 mm high with a hairy leaf 70–150 mm long by 3-6 mm wide and up to three lemon-yellow flowers 50–80 mm across. The [labellum](#) may be [entire](#) (smooth margined) or have a few irregularly spaced marginal teeth.

## Distinguishing Features

It is distinguished from the superficially similar subsp. *transiens* by its slightly larger flowers and broader [labellum](#) which sometimes has [entire](#) margins.

## WA Conservation Code (Threatened Status)

Not Listed



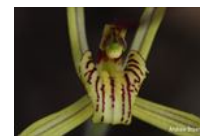
[Caladenia caesarea](#) subsp. 'Mooradung'



[Caladenia caesarea](#) subsp. 'Mooradung' distribution



[Caladenia caesarea](#) subsp. 'Mooradung'



[Caladenia caesarea](#) subsp. 'Mooradung'



[Caladenia caesarea](#) subsp. 'Mooradung'

Copyright © 2024. WANOSCG All rights reserved. (ver: April 2024)



Web edition hosted at <https://keys.lucidcentral.org/keys/v4/wa-orchids/>